

EQUIFORCE PSYLLIUM

Psyllium husks for horses

EquiForce Psyllium are dried husks from the plant *Plantago ovata*, more commonly known as Isphagol or Psyllium. The husks (= outer seed shells or bran) from this plant have a very high content of gelly-forming, dietetic fibres. When soaked in water and saliva in the horse's digestive tract the husks form a thick mucilage that has unique sand-binding properties. Sand and soil that may be accumulated in the horse's large intestine is encapsulated and expelled with the manure. Accumulation of sand or soil ingested by the horse on the pasture is prevented.

Watch out for the purity !

The gelly-forming fibres are exclusively located in the husk or mucilage zone of the psyllium seed. The total husk content in a psyllium seed is 25 to 30 %, the remaining 70-75 % is protein and starch. In order to improve the gelly-forming properties the seeds in good Psyllium products are therefore milled and cleaned until the concentration of pure husk is 85-95 %. The higher the concentration of husk, the more refining steps are needed. Some manufacturers cut corners and offer a cheaper product of less refined husks, or even unrefined, whole crushed seeds, but these products are much less efficient as they only contain down to as little as less than a third of the gelly-forming fibres, compared to the highly refined products. Therefore the purity of a product must always be checked carefully.

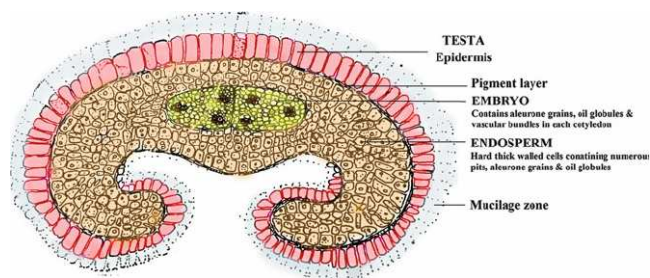


Figure.1: Cross section of the Psyllium seed. The husk and gelly-forming properties are only in the mucilage (white) zone. Milling and cleaning aims to separate this zone from the rest of the seed.

EquiForce Psyllium is a highly refined husk product of 95 % purity. It has excellent gelly-forming properties and is recommended for sand-out purposes and to prevent additional sand and soil accumulation in the horse's intestine. This is especially important for horses that have access to sandy/muddy pastures or paddocks, or just pastures where all the high grass is eaten up and the horses are searching the ground for grass roots. These horses will inevitably ingest some sand and soil that can accumulate in the intestine and make the horse more prone to digestive imbalances and sand colic. By feeding these horses a smaller dose of EquiForce Psyllium on a continuous basis, accumulation of sand and soil in the intestine can be prevented.



Daily dose: For sand-out purposes: Horses: 100 g, ponies: 50-75 g. Must be fed for 30 days. For prevention purposes: ½-1/4 dose on a continuous basis. Feed 1-2 times a day, on top of the feed ration. Because of the gelly-forming properties the product should not be soaked before feeding.

Composition: Psyllium husks from *Plantago ovata*, (95 % pure) *.

Analysis: crude fibre: 4,9 %, crude protein: 9,3 %, crude fat: 4,4 %, crude ash: 3,3 %, sodium: 0 %.

Particle size: 60 mesh (powder).

Color: off-white to light brown.

Feed category: Feed material for horses.

Storage: Dry and in closed packaging.

Country of origin: India.

HS-code: 12119086909.

Note: Contains no substances prohibited by the FEI or The British Jockey Club.

Packaging:

3 kg Jar (30-60 daily doses)

20 kg bag (200-400 daily doses)

*purity refers to the husks (or bran). The remaining 5 % are seed residues.